

# Digital Wired Door Key (RC400)

## User Guide



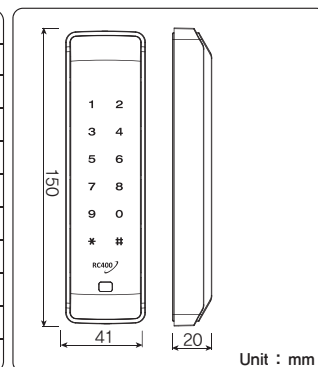
Thank you for purchasing the dual purpose RC400 Wired Digital Door Key / Digital Touch Pad.



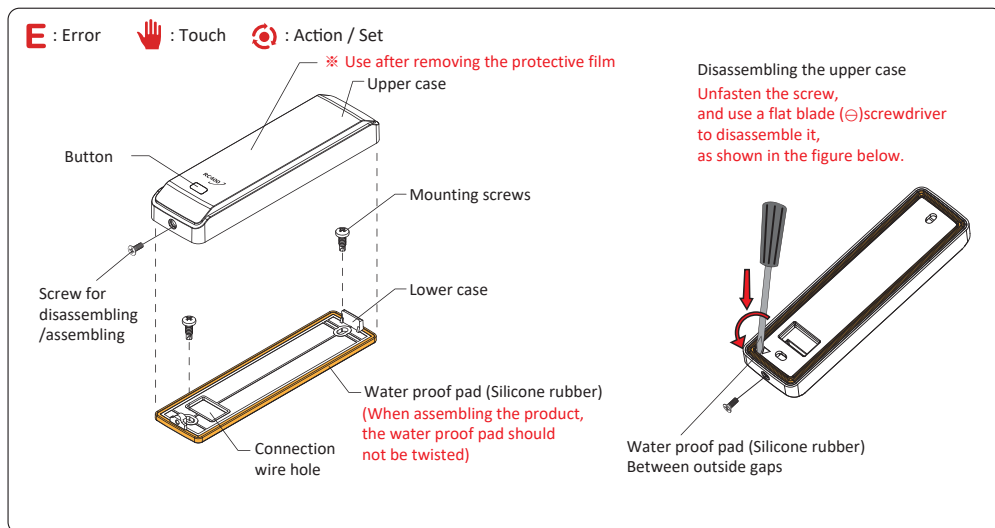
### 1 COMPOSITION & SPECIFICATIONS

Composition	Wired Digital Door Key (RC400)	1EA
	Mounting screws (4x16)	2EA
	Mounting template	1EA
	Connection wire	1EA
	User's Manual	1 copy
Specification	Power supply	DC 12~30V, AC 12~24V
	Relay contact capacity	DC30V / 1A
	Operating temperature	-20°C~50°C
	Type	ISO14443A(Mifare) / 13.56MHz
	Power consumption	300mA Under
	International Protection	IP54 (water proof)

### 2 DIMENSION



### 3 GENERAL INFORMATION



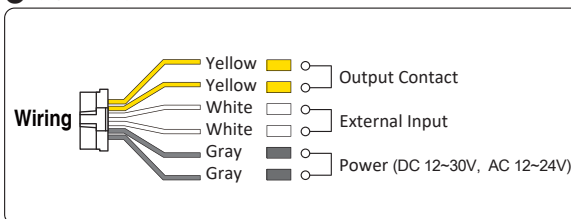
### 3 OPERATION CHECK & CAUTION

1. Be sure to connect DC12 ~ 30V / AC12 ~ 24V.
2. When it powers on, the LEDs will be displayed sequentially; once all LEDs have been displayed, "beep" sound is heard.
3. Since this system is capacitive touch type, it will not respond to a gloved hand.

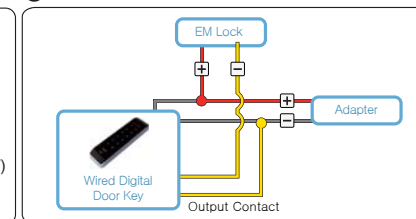
### 4 HOW TO USE

- 1) [Card Registration]  
 ①②③④ → ①②③④ → # → ① → # → Access card (Serial registration is possible) → # → \* (end)  
 ①②③④ → ①②③④ → # → ① → # → Card address(0001~0500) → Card → # → \* (end)  
 Example) Serial registration : if the first address is [0100], next address is [0101] automatically increase.
- 2) [Password Registration]  
 ①②③④ → ①②③④ → # → ② → # → Password(4digit) → # → \* (end)  
 (Serial registration)
- 3) [Card address Delete]  
 ①②③④ → ①②③④ → # → ③ → # → Card address (4digit or serial delete) → # → \* (end)
- 4) [Contact Time]  
 ①②③④ → ①②③④ → # → ⑤ → # → 01~60 (01~60sec.) → # → \* (end)  
 Example) Setup 2sec : 0+2, 20sec : 2+0 (Default value: 2sec)
- 5) [All Card Delete]  
 ①②③④ → ①②③④ → # → ⑥ → # (end)
- 6) [All Password Delete]  
 ①②③④ → ①②③④ → # → ⑦ → # (end)
- 7) [Card or Password Delete]  
 Card : ①②③④ → ①②③④ → # → ⑧ → # → Access Card (Serial possible) → # → \* (end)  
 Password : ①②③④ → ①②③④ → # → ⑧ → # → Password → # → \* (end)
- 8) [Toggle mode contact change]  
 ①②③④ → ①②③④ → # → ②① → # → Set value (⊖~①) → # (end)  
 Set value - ⊖ : Normal , ① : Toggle mode (Default value : ⊖)
- 9) [Operation mode setting]  
 ①②③④ → ①②③④ → # → ③ → # → Set value (⊖~①) → # → \* (end)  
 Set value - ⊖:NO, ①: NC (Default value : ⊖)
- 10) [Touch switch mode setting]  
 ①②③④ → ①②③④ → # → ①① → # → Set value (⊖~①) → # (end)  
 Set value - ⊖: touch switch mode is activated, ①: touch switch mode is deactivated (Default value : ⊖)  
 \*For more detailed information, please refer to the back page "setting touch function to active"
- 11) [Illumination brightness setting]  
 ①②③④ → ①②③④ → # → ①② → # → Set value (⊖~③) → # → \* (end)  
 Set value -⊖: Illumination OFF, ③: The highest degree of brightness (Default value : ②)  
 In case brightness of the illumination is set at off, press touch pad then the numbers will be appeared.
- 12) [System number change]  
 ①②③④ → ①②③④ → # → \* → # → # → Number in use → # → New Number → # (end)  
 System number must be 4 digits (Default value : 1234)
- 13) [System Initialization]  
 ①②③④ → ①②③④ → \* → # → Initializing → Exit after the LEDs blink. → (end)

### 5 CONTACT TIME

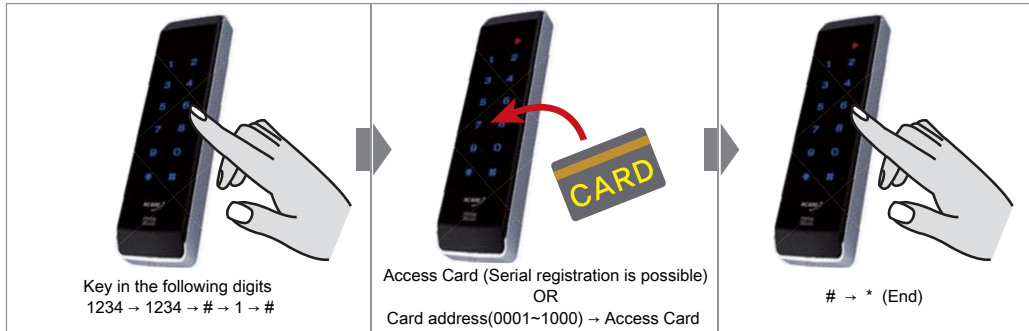


### 6 EM LOCK WIRING



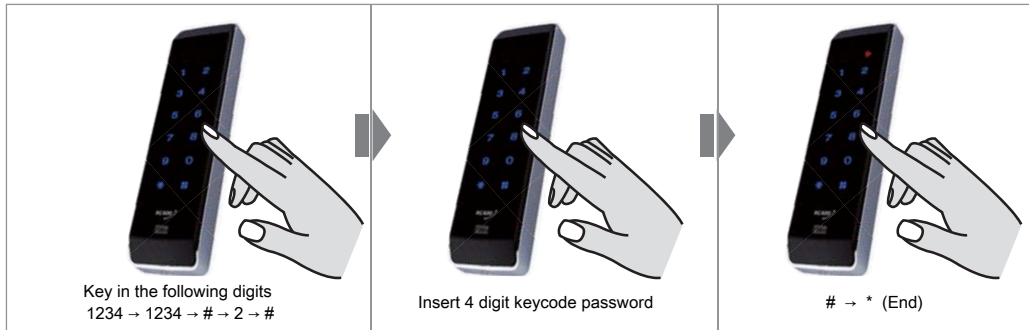


### [Card registration] Card type : ISO 14443 (Mifare)



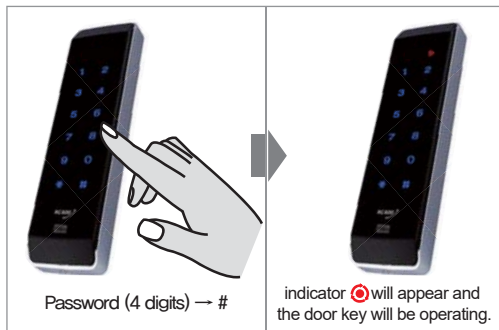
[Note] Serial registration (If the first address will be [0100], next address is [0101] automatically increase.)

### [Password registration]



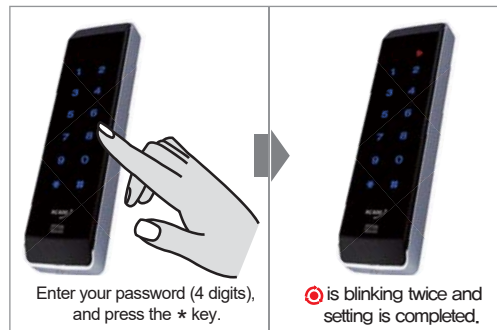
### [Open a door]

Password (4 digits) ⇒ # (If more than 4 digit password is entered, just the last four digits should be identical (right) with your preset password to open the door.)



### [How to block external input]

password (4 digits) → \*



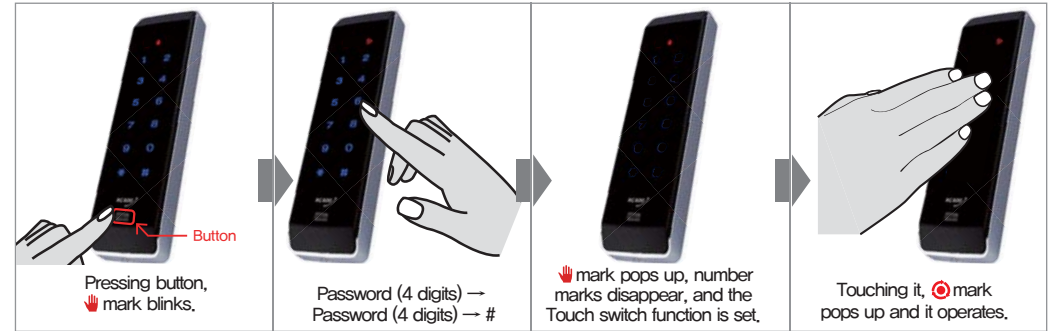
[Note] Disconnect the input of white line which is external input. Door is opened and automatically released.

### [Setting Touch function to active]

button ⇒ password (4 digits) ⇒ password (4 digits) ⇒ #

(whenever a change is made, this function toggles between Enabled (active) and Disabled (inactive)

[Caution!] To use touch feature set the Touch function menu on 1) firstly.



### [Setting Touch Function to inactive]

button ⇒ password (4 digits) ⇒ password (4 digits) ⇒ #

(whenever a change is made, this function toggles between Enabled (active) and Disabled (inactive)

[Caution!] To use touch feature set the Touch function menu on 1) firstly.



### [WARNING & CAUTION]

